



**TPR-01 TEMPORARY GROUND ANCHORS**



**Temporary TPR-01 ground anchors** are produced in compliance with the **Ministerial Decree as of 14.01.2008, Decree no. 12391 22.12.2011** and with the European and Italian Standards.

The **TPR-01** ground anchor is usually used in the construction of bulkheads and diaphragms, where the type of ground needs temporary anchors to be used.

The **TPR-01** ground anchors are defined temporary as their expected design life is under two years.

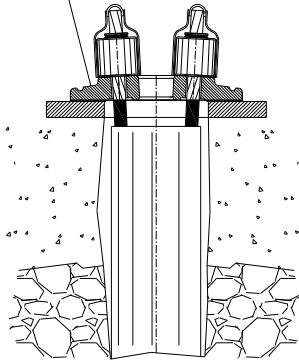


**The anchor is made as follows:**

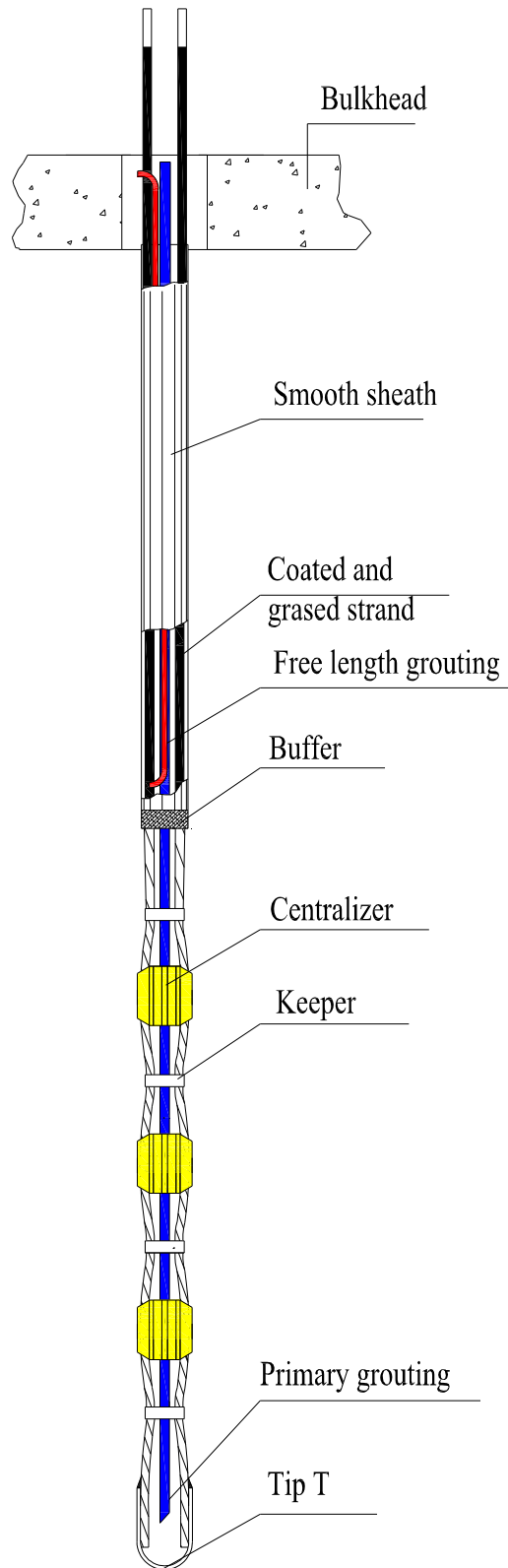
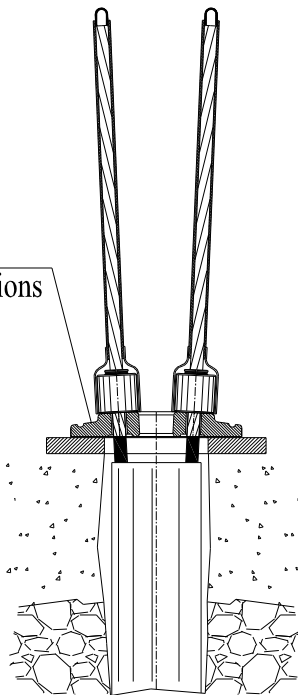
- In the active part, the strands are separated by special spacers which guarantee the tendon to maintain a sinusoidal shape. By means of suitable strapping and/or taping, the sinusoidal shape of the tendon increases the adherence with the foundation cement mix. Grouting takes place via 16x20 mm polyethylene/polypropylene tubes that can guarantee a max. operating grouting pressure of 10 bar at 40°C and a burst pressure of 15 bar at 40°C.
- The end part of the anchor is provided with a steel ogive to ease its insertion into the drilling hole.
- The free length is protected by inserting a smooth or corrugated sheath. Inside, strands are protected by greasing and sheathing by means of 16x19.5 mm tubes. The separation of the free length from the active part is achieved by way of a buffer of sealing material, which allows both parts to be perfectly hermetic.
- The free length is protected by greasing and sheathing each single strand by means of 16x19.5 mm tubes.
- Centralizers inserted into the foundation with a 1.5 m pitch.

**TPR-01A TEMPORARY GROUND ANCHORS**  
(Installed with **TTR-E** type anchor)

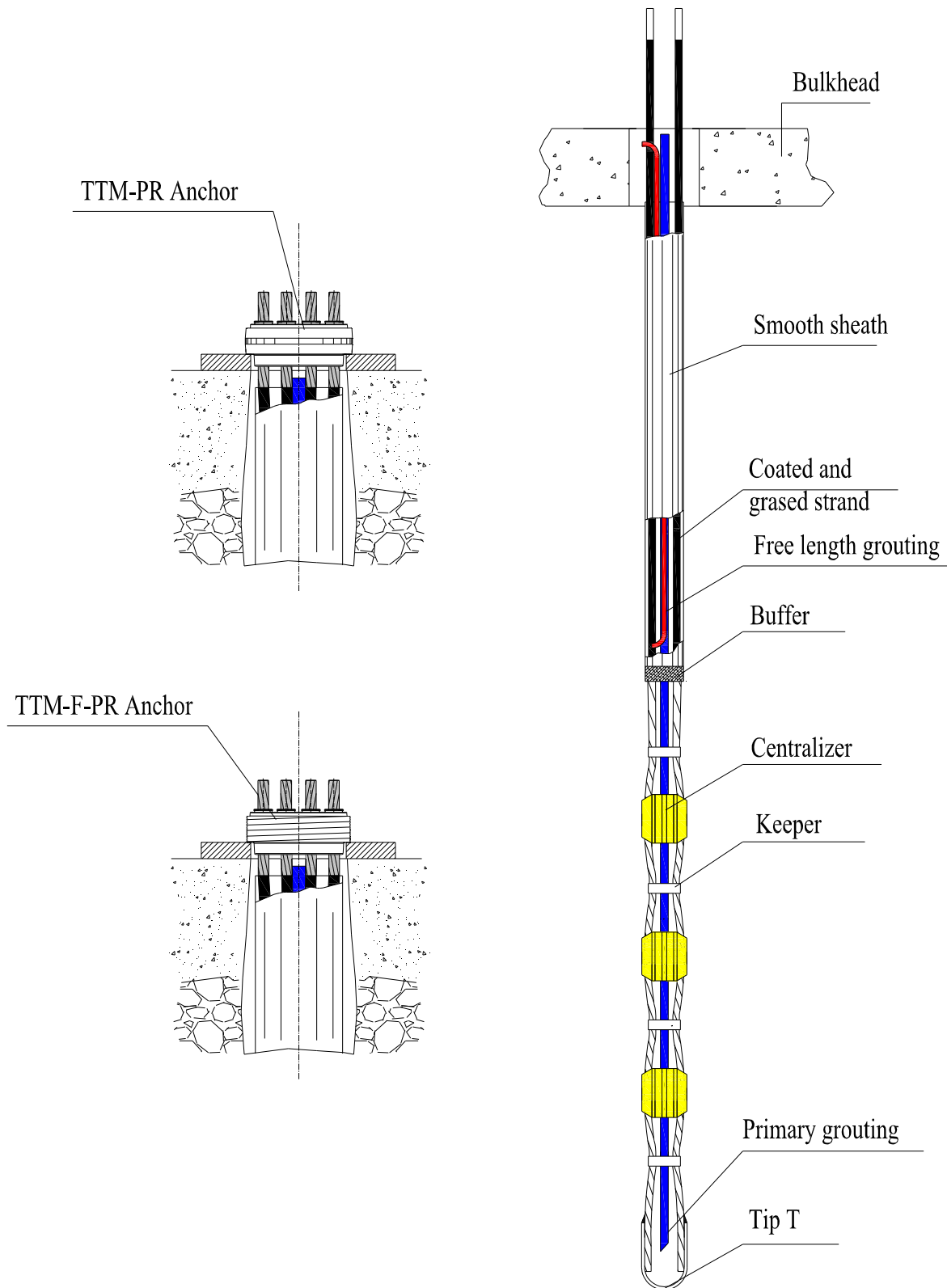
TTR-E Anchor  
elementary protections  
not riteabile



TTR-E Anchor  
elementary protections  
riteabile

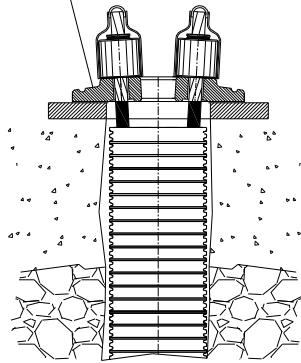


**TPR-01A TEMPORARY GROUND ANCHORS**  
(Installed with TTM and TTM-F type anchor)

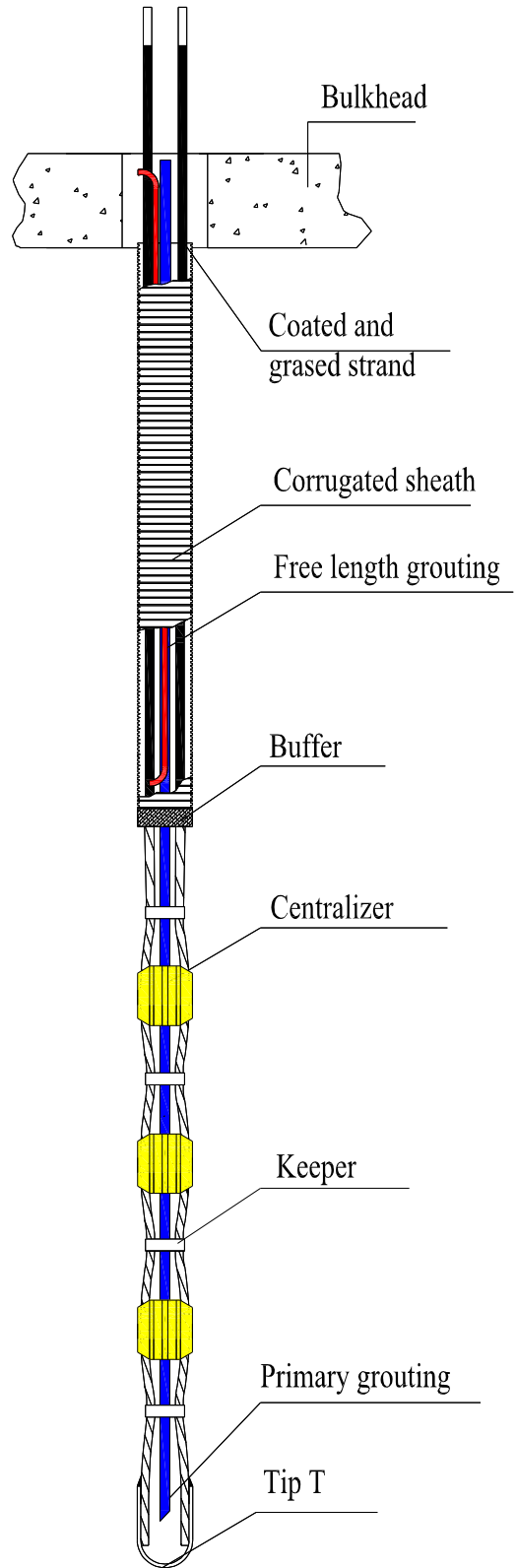
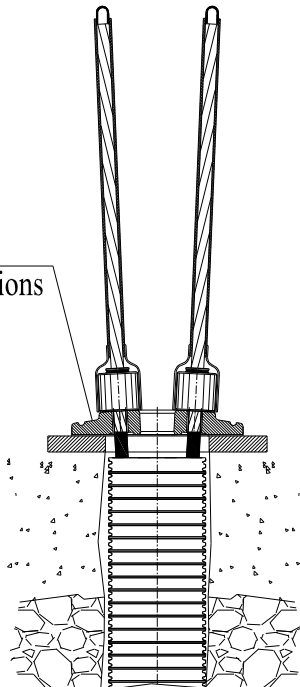


**TPR-01B TEMPORARY GROUND ANCHORS**  
(Installed with TTR-E type anchor)

TTR-E Anchor  
elementary protections  
not rite-sable



TTR-E Anchor  
elementary protections  
rite-sable



**TPR-01B TEMPORARY GROUND ANCHORS**  
(Installed with TTM and TTM-F type anchor)

